

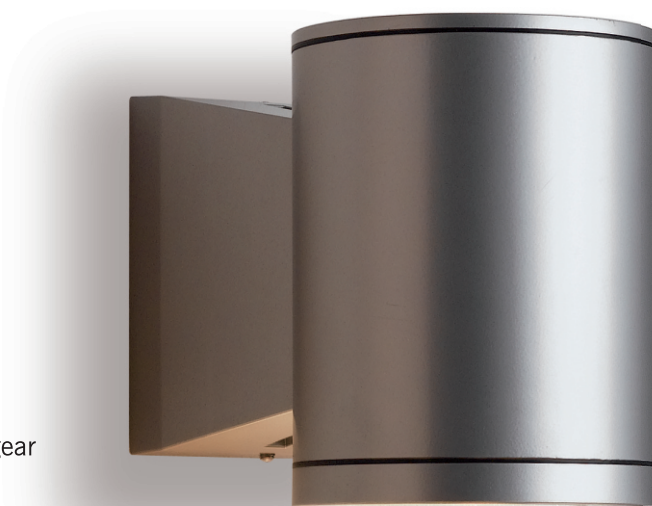
TANGO 3 & 4 DOWNLIGHT

LIGMAN

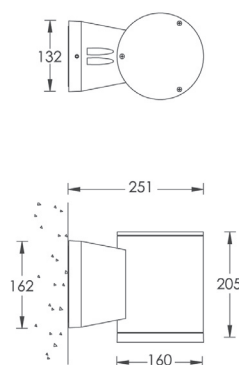


A small (**TANGO 3**) and large (**TANGO 24**) wall luminaire with downward light distribution. Ideally suited to accommodate metal halide lamps

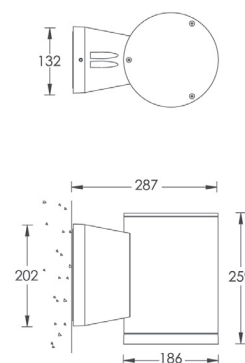
- Die cast aluminium body
- Clear toughened glass
- Integral anti-glare baffle
- Stainless steel screws
- Durable silicone rubber gasket
- Single cable entry
- Corrosion resistant
- One piece anodized high purity aluminum reflector
- Medium beam spread
- Electronic metal halide control gear
- **TANGO 3** - 35W metal halide
- **TANGO 4** - 70W and 150W metal halide
- IP65



TANGO THREE 40412(M)-04



TANGO 3



TANGO 4

PRODUCT CODE	Watts	Kg
TANGO THREE 30412(M)-04 Metallic Silver	1 x 35W MH	2,66
TANGO FOUR 30395(M)-04 Metallic Silver	1 x 70W MH	3,44
TANGO FOUR 30396(M)-04 Metallic Silver	1 x 150W MH	3,44